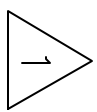
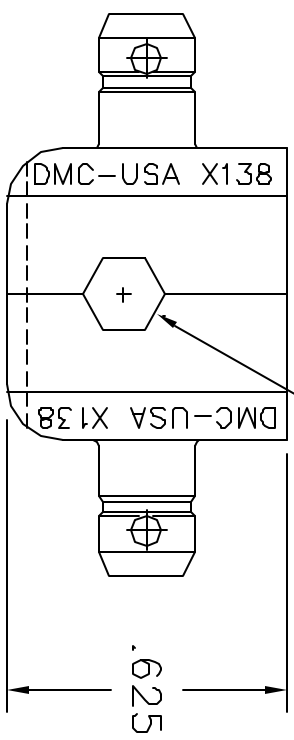
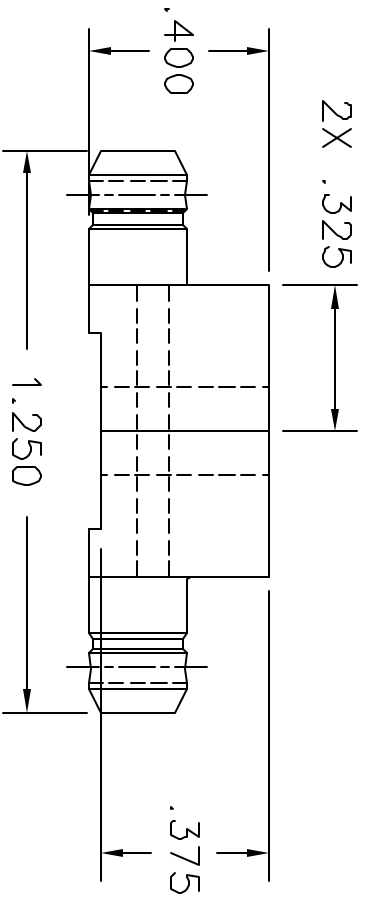
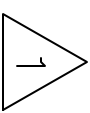


REVISIONS				
REV. SYM.	E.C.O. NUMBER	DESCRIPTION	BY DATE	APP'D DATE
1		ORIGINAL RELEASE	T. STANFILL 8-31-88	DE 8-88

**UNCONTROLLED DOCUMENT
WILL NOT BE UPDATED**



.160 HEX ACROSS FLATS



USE GAGE G188.

NOTES:

RESTRICTED & CONFIDENTIAL

CONFIDENTIAL PROPERTY OF DANIELS MANUFACTURING CORP. NOT TO BE DISCLOSED TO OTHERS, REPRODUCED OR USED FOR ANY OTHER PURPOSE, EXCEPT AS AUTHORIZED IN WRITING BY DANIELS MANUFACTURING. MUST BE RETURNED TO DANIELS MANUFACTURING CORP. ON COMPLETION OF ORDER OR OTHER PURPOSE FOR WHICH SENT.

MAT'L./BK

HEAT TREAT

FINISH

ITEM	PART NO.	DATE	QTY.	DESCRIPTION/REMARKS
DRN. T. STANFILL		8-31-88		
CHK'D. DE		8-88		
APP'D.		DATE		
APP'D.		DATE		

NOTE: THIS DRAWING IS AN OUTLINE DRAWING OF THE RESPECTIVE DMC PART NUMBER INDICATED. ACTUAL DMC PART NUMBER IS DRAWING NUMBER WITHOUT THE "-ENV" SUFFIX.

WHERE USED: DIE SET ENVELOPE DRAWING

SIZE	SCALE	CAD FILE NO	SHEET OF
A	2X	X138-ENV	1

DWG. NO. X138-ENV

REV. 1

DO NOT SCALE DRAWING